



G.R.
MANUFACTURING, INC.

JOHN DEERE Approved
Custom Job Facility

Guarding Packages for: **JOHN DEERE G-Series CTL/SSL**

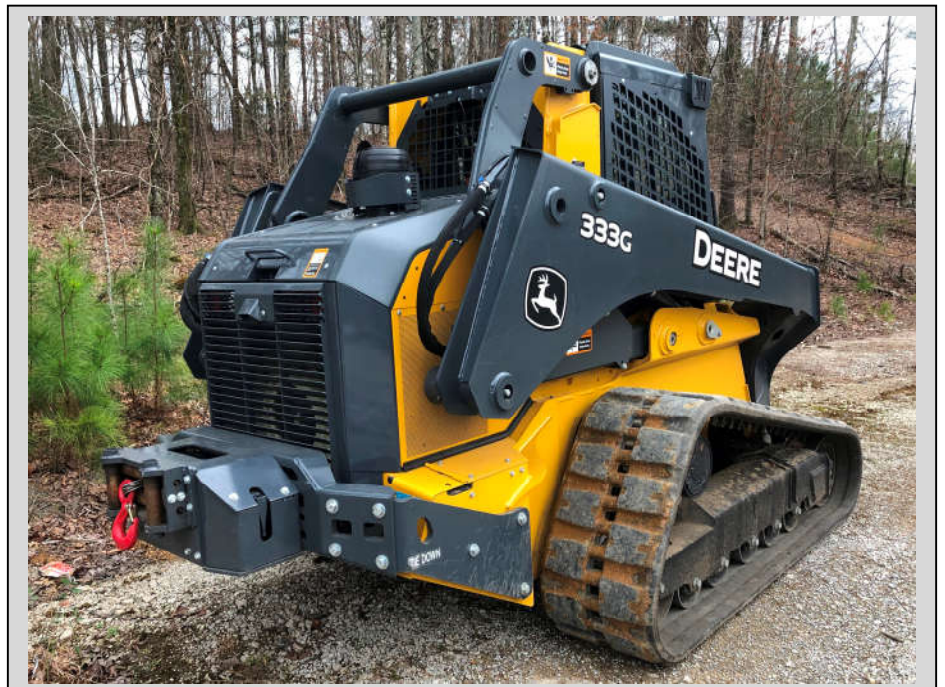


John Deere G-Series
Forestry Package
Includes:

- Level II FOPS Plate
- Side and Rear Window Screens
- Boom Arm Linkage Hose Guards
- Toe Guard, Front
- Light Guard, Front
- Auxiliary Hydraulic Coupler Guard
- Rear Bumper
- Bottom Opening Cover Plates
- Roof Debris Cover
- Wiper / Arm Guard

Other Options:

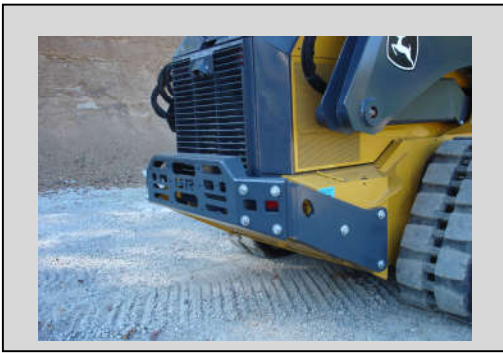
- Rear Winch, Electric
15,000 lbs on bare drum
with 80' x 1/2" wire rope
- Rod Guards, Bucket Cyl.
- Wiper / Arm Guard
- Precleaner Guard
- Seal Kit, Debris



G.R. Manufacturing, Inc. – 4800 Commerce Drive – Trussville, AL 35173

Phone: 800.841.8001 Fax 205.655.8005

Visit us on the web at www.GRtractors.com



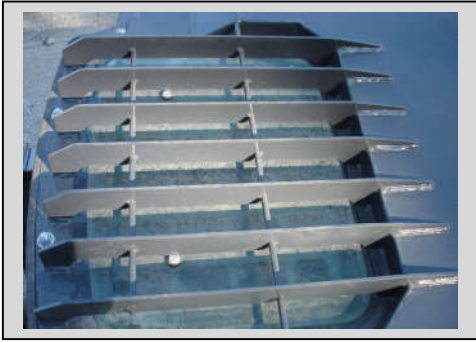
Rear Bumper



Bucket Cylinder Rod Guards



Aux Hyd Line Quick Coupler Guard



FOPs Guard



Front Work Light Guards



Boom Arm Linkage Hose Guard

The following kits are available through any John Deere Construction and Forestry Dealer. Please see your local dealer or visit our website for additional product information, pricing & pictures at www.grtractors.com

330G thru 333G Kits

		Weight	Install
BYT12664	Forestry Package (GR #706247)	725 lbs	24 hrs
BYT10261	Rear Bumper (GR#705921)	249 lbs	3 hrs
AT445276	Level II FOPS Structure (GR#705724)	70 lbs	3 hrs
	Tested under ISO 3449, Falling-Object Protection Structure		
BYT10260	Auxiliary Hydraulic Line Quick Coupler Guard (GR#705929)	12 lbs	2 hrs
BYT10258	Operator Rear Window / Side Window Guards (GR#705920)	90 lbs	4 hrs
	Meets ISO 8084 & SAE J1084		
AT372950	Front Toe Guard (GR#705321)	46 lbs	3 hrs
BYT10663	Bottom Opening Cover Plates (GR#706248) SN: 408780 - xxxx	91 lbs	3 hrs
BYT10262	Bottom Opening Cover Plates (GR#705925) SN# xxxx - 408779	48 lbs	3 hrs
BYT10259	Front Work Lights Guard (GR#705927)	6 lbs	2 hrs
706293	Winch, Rear Mounted, Electric	350 lbs	8 hrs
	Requires: Rear Deflector/Bumper Kit		
705942	Boom Arm Linkage Guards (GR#705942)	56 lbs	2 hrs
BYT10913	Guard, Bucket Cylinder Rod (GR #706007)	13 lbs	3 hr
705966	Precleaner Guard, Turbine Type	8 lbs	1 hr
706155	Seal Kit, Toe Guard and Final Drives (new)	5 lbs.	2 hr
BYT12304	Wiper/Arm Guard (GR#706157)	5 lbs	1 hr

G.R. Manufacturing, Inc. is committed to providing operator and equipment protection as well as attachments and conversions for John Deere equipment used in various applications. We welcome any suggestions for new products and feedback on existing products. Please call or visit our website at www.GRtractors.com for additional product information.

"We Build World Class Products for World Class Machines!"

G.R. Manufacturing, Inc. - 4800 Commerce Drive - Trussville, AL 35173
 Phone: 800.841.8001 Fax 205.655.8005